

REGIONE



TOSCANA

**STUDI ED INDAGINI DI MICROZONAZIONE SISMICA DI LIVELLO 1
NEI COMUNI DI PALAIA - CAPANNOLI - PONTEDERA**



RAPPORTO SULLE INDAGINI

E2 - GEOELETTRICA MONOGRAFIE E REPORTS

RTP incaricata:

Dott. Geol. Fabio Mezzetti

Dott. Geol. Andrea Casella

Dott. Geol. Alessandro Fontanelli

Dott. Geol. Benedetta Polverosi

Dott. Geol. Giorgio Della Croce

Studio associato Geol. Applicata di Benedetti e Carmignani

Arch. Maria Rosaria De Vita

Settembre 2018



ubicazione stendimento postazione 01 - loc. "Il Logo" - Palaia

scala 1:1.000



foto
stendimento
postazione n.1

Table with 11 columns: A, B, M, N, Vp, In, p.medio, a, n, p. Contains geophysical data for array Wenner-Schlumberger.

Table with 11 columns: A, B, M, N, Vp, In, p.medio, a, n, p. Contains geophysical data for array Wenner-Schlumberger.

Table with 11 columns: A, B, M, N, Vp, In, p.medio, a, n, p. Contains geophysical data for array Wenner-Schlumberger.

Table with 11 columns: A, B, M, N, Vp, In, p.medio, a, n, p. Contains geophysical data for array Wenner-Schlumberger.

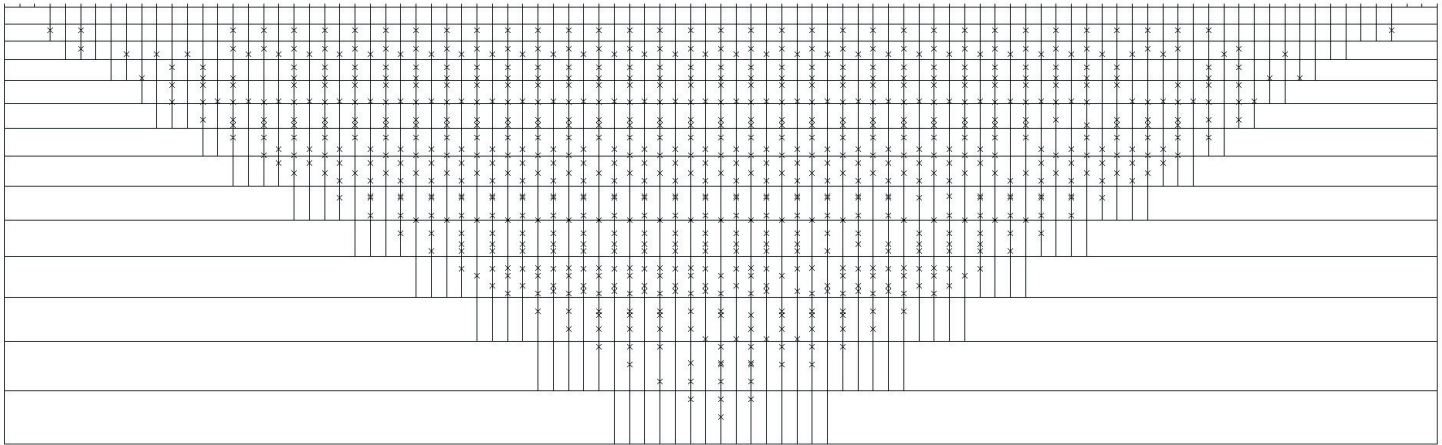
Table with 10 columns (A, B, M, N, Vp, In, p.medio, a, n, p) and 100 rows of numerical data.

Table with 10 columns (A, B, M, N, Vp, In, p.medio, a, n, p) and 100 rows of numerical data.

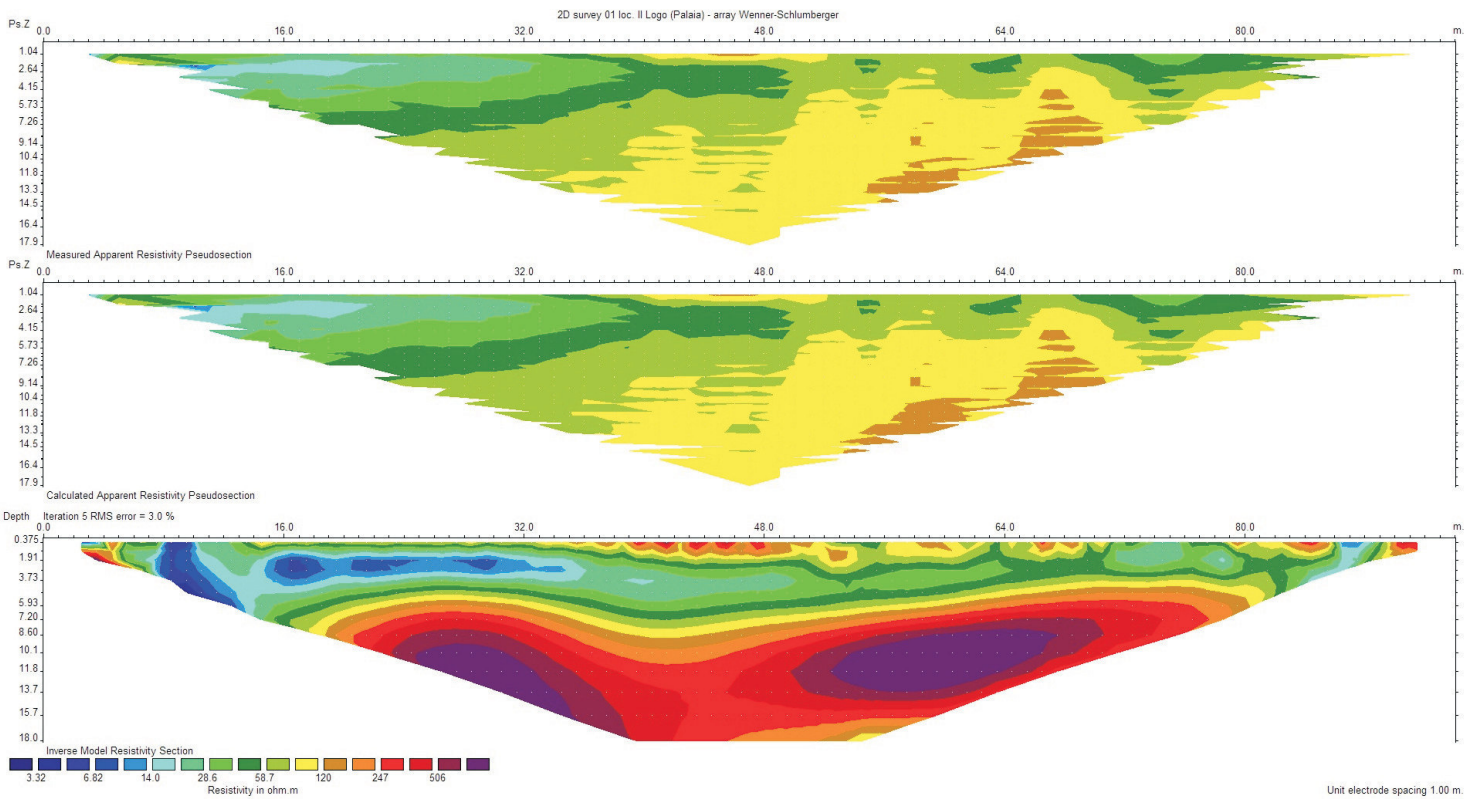
Table with 10 columns (A, B, M, N, Vp, In, p.medio, a, n, p) and 100 rows of numerical data.

Table with 10 columns (A, B, M, N, Vp, In, p.medio, a, n, p) and 100 rows of numerical data.

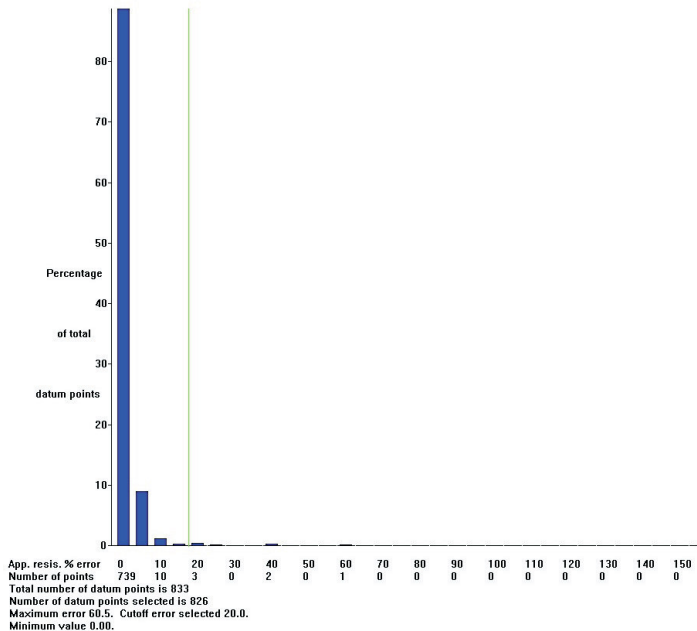
2D survey 01 loc. II Logo (Palaia) - array Wenner-Schlumberger
ARRANGEMENT OF MODEL BLOCKS AND APPARENT RESISTIVITY DATUM POINTS



□ Model block Number of model blocks 858
 × Datum point Number of datum points 826
 Number of model layers is 14 Unit electrode spacing 1.00 m.
 Minimum pseudodepth is 1.04. Maximum pseudodepth is 17.9.
 Number of electrodes is 95.



2D survey 01 loc. II Logo (Palaia) - array Wenner-Schlumberger

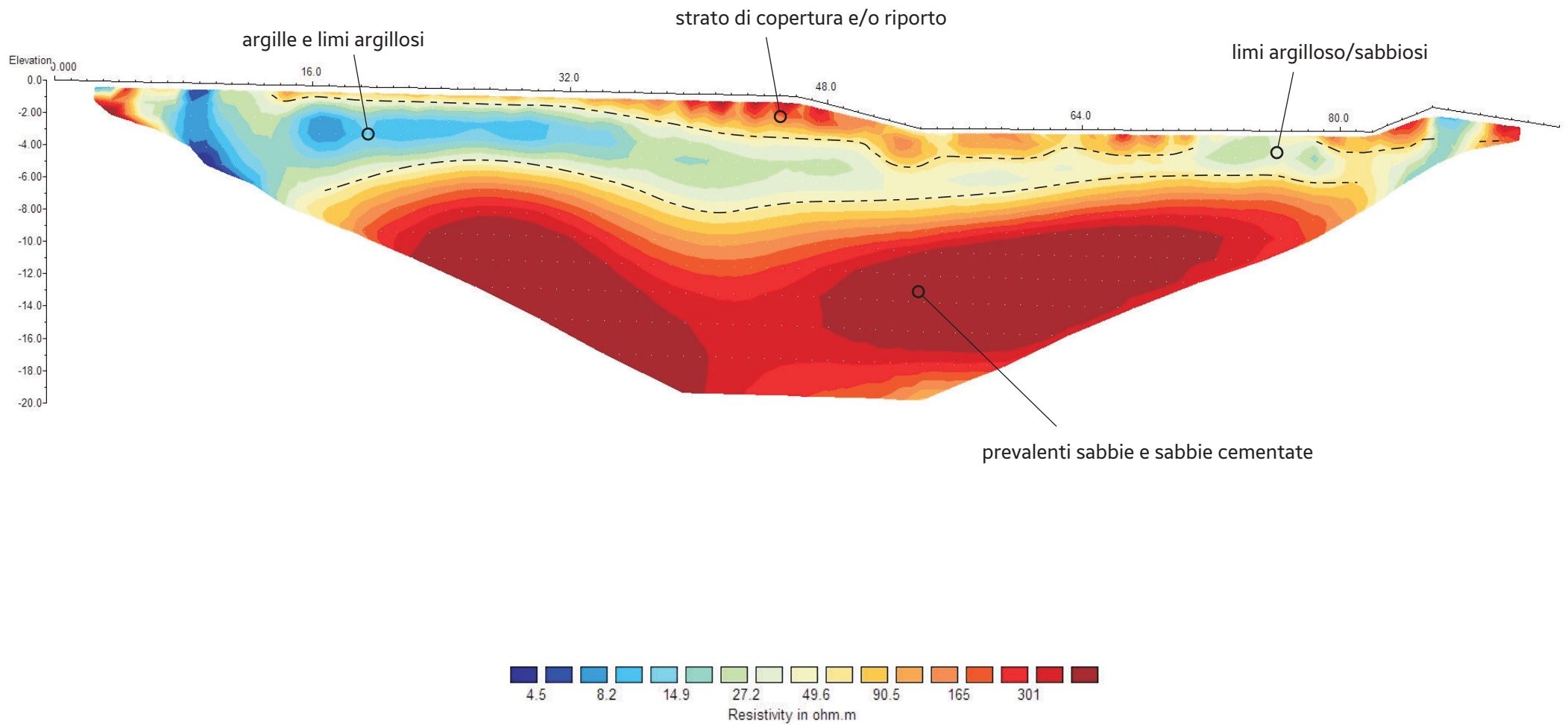


postazione 01

schema modello a blocchi

pseudosezioni e modello di resistività

schema errori sull'inversione per classi percentuali



sez. elettrostratigrafica postazione n. 01 - loc. "Il Logo" - Palaia - scala 1:350



scala 1:1.000

ubicazione stendimento postazione 02 - loc. Alica - Palaia

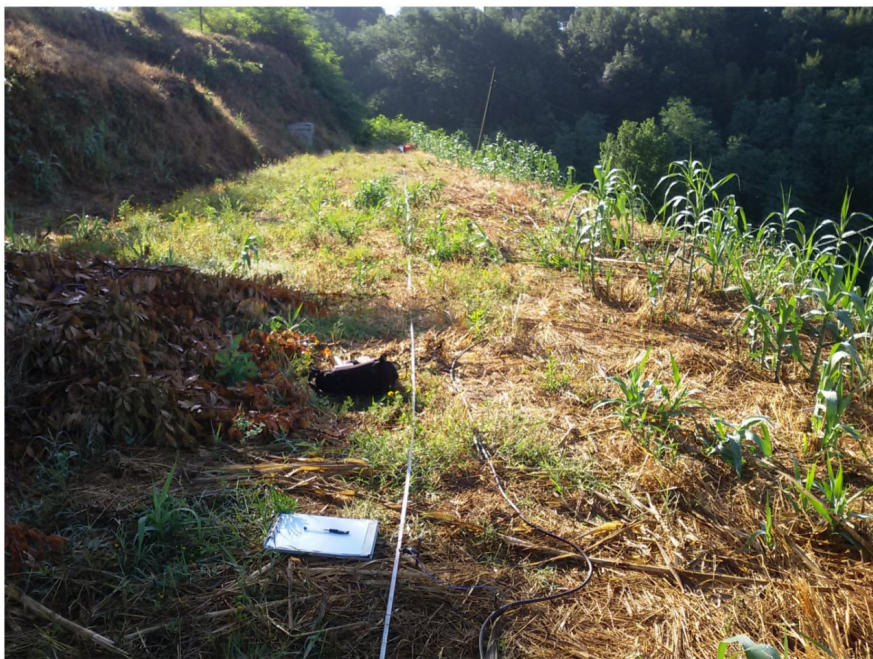
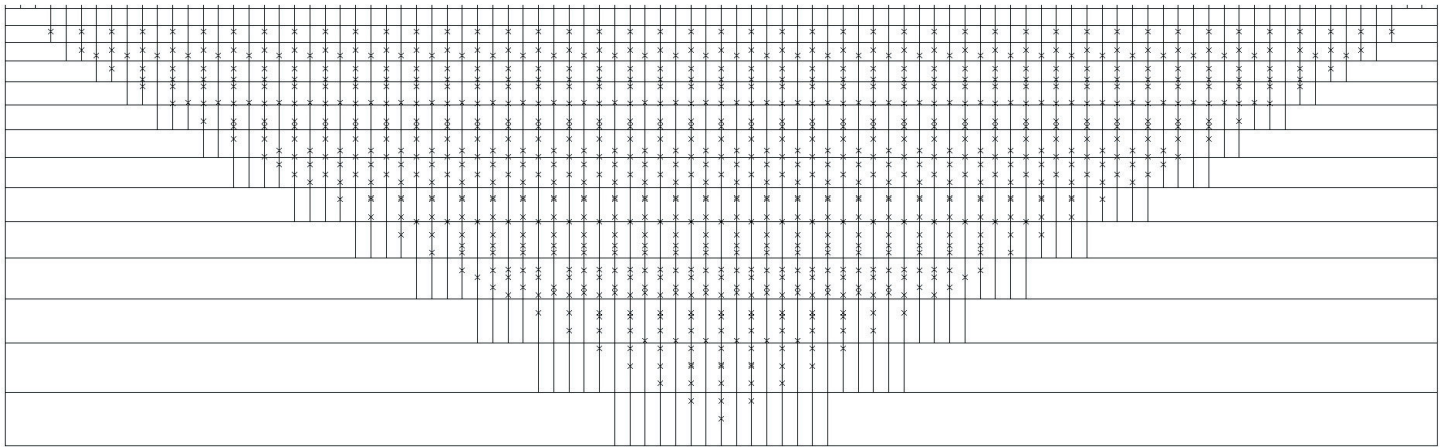
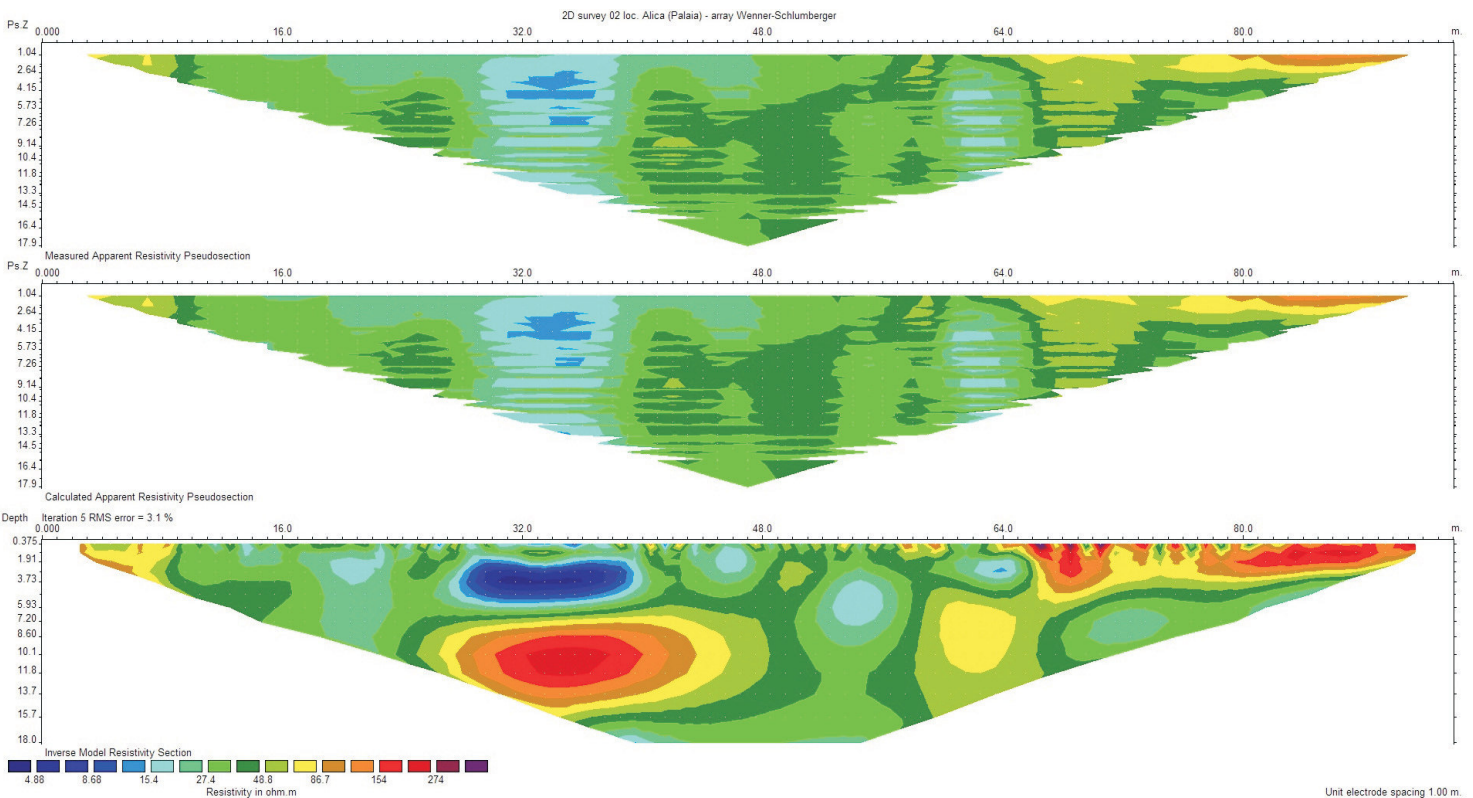


foto stendimento
postazione n. 2

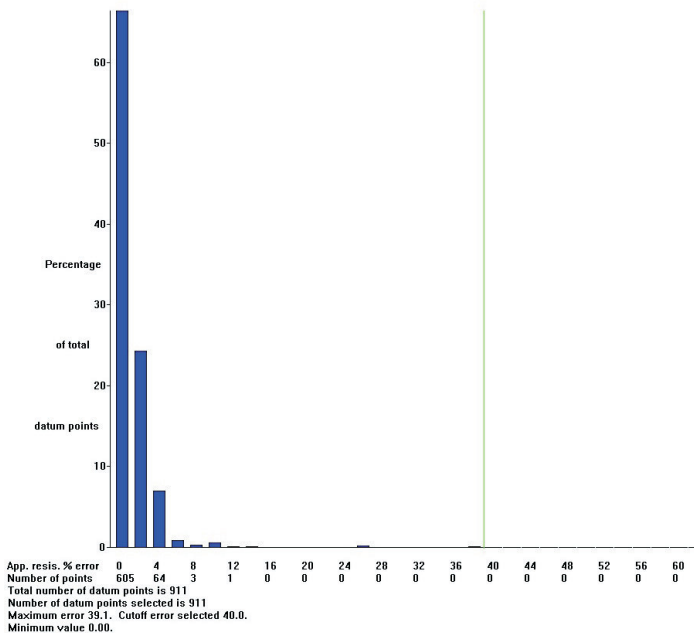
2D survey 02 loc. Alica (Palais) - array Wenner-Schlumberger
ARRANGEMENT OF MODEL BLOCKS AND APPARENT RESISTIVITY DATUM POINTS



Model block Number of model blocks 870
x Datum point Number of datum points 911
 Number of model layers is 14 Unit electrode spacing 1.00 m.
 Minimum pseudodepth is 1.00. Maximum pseudodepth is 17.9.
 Number of electrodes is 95.



2D survey 02 loc. Alica (Palais) - array Wenner-Schlumberger

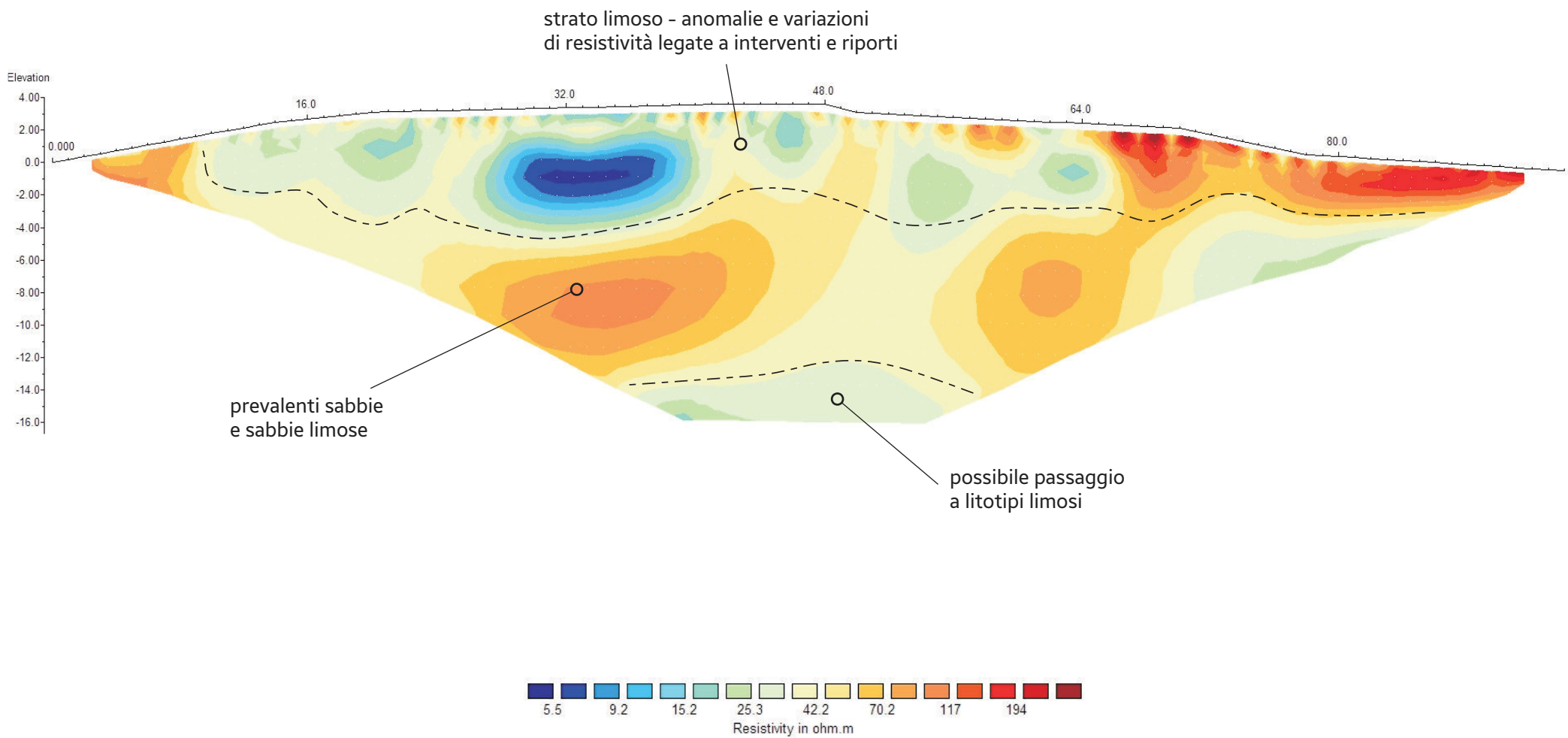


postazione 02

schema modello a blocchi

pseudosezioni e modello di resistività

schema errori sull'inversione per classi percentuali



sez. elettrostratigrafica postazione n. 02 - loc. Alica - scala 1:350



scala 1:1.000

ubicazione stendimento postazione 03 - "Agriturismo Alpaca" - Pontedera

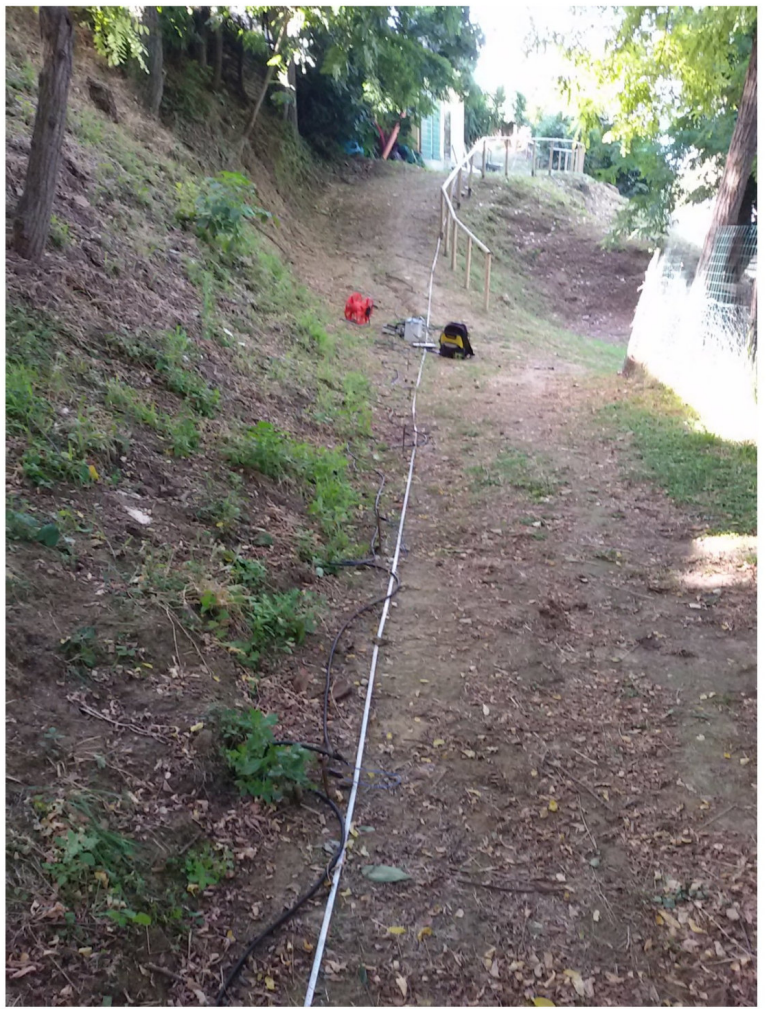
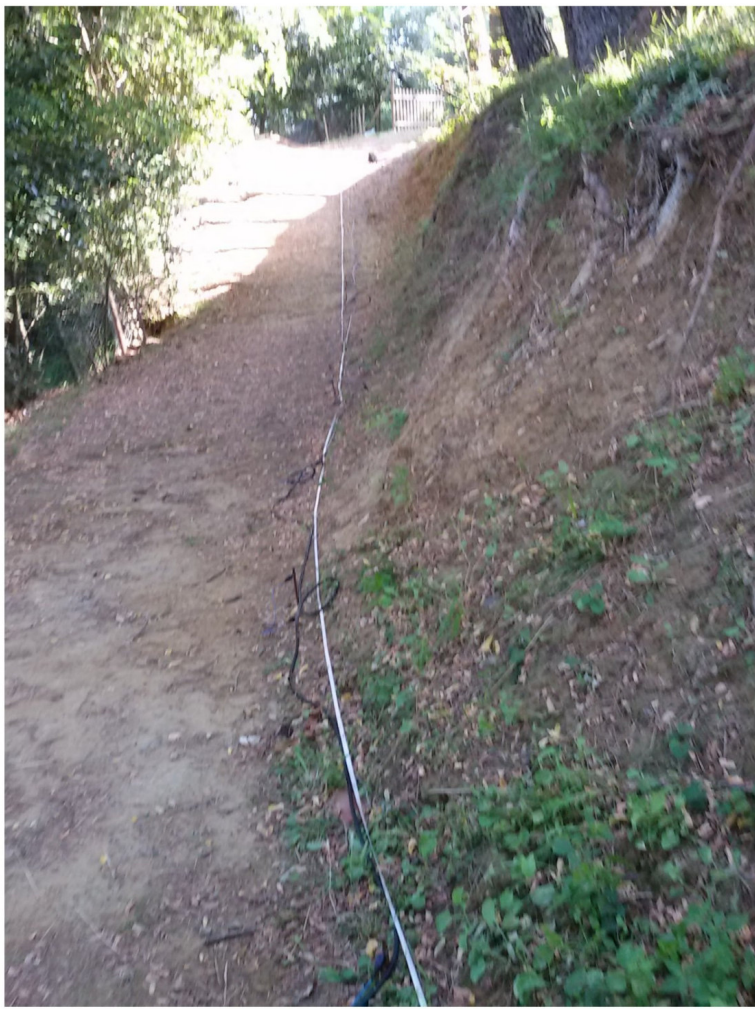


foto stendimento
postazione n. 3

Table with 12 columns: A, B, M, N, Vp, In, p.medio, a, n, p. Contains 48 rows of data.

Table with 12 columns: A, B, M, N, Vp, In, p.medio, a, n, p. Contains 48 rows of data.

Table with 12 columns: A, B, M, N, Vp, In, p.medio, a, n, p. Contains 48 rows of data.

Table with 12 columns: A, B, M, N, Vp, In, p.medio, a, n, p. Contains 48 rows of data.

Table with 10 columns: A, B, M, N, Vp, In, p.medio, a, n, p. Rows contain numerical data for various survey points.

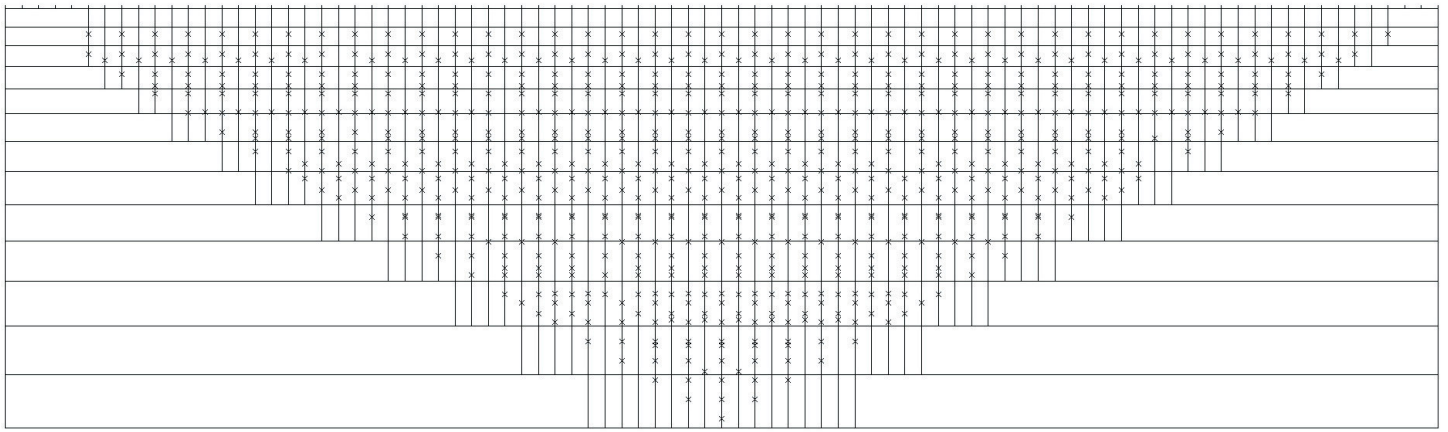
Table with 10 columns: A, B, M, N, Vp, In, p.medio, a, n, p. Rows contain numerical data for various survey points.

Table with 10 columns: A, B, M, N, Vp, In, p.medio, a, n, p. Rows contain numerical data for various survey points.

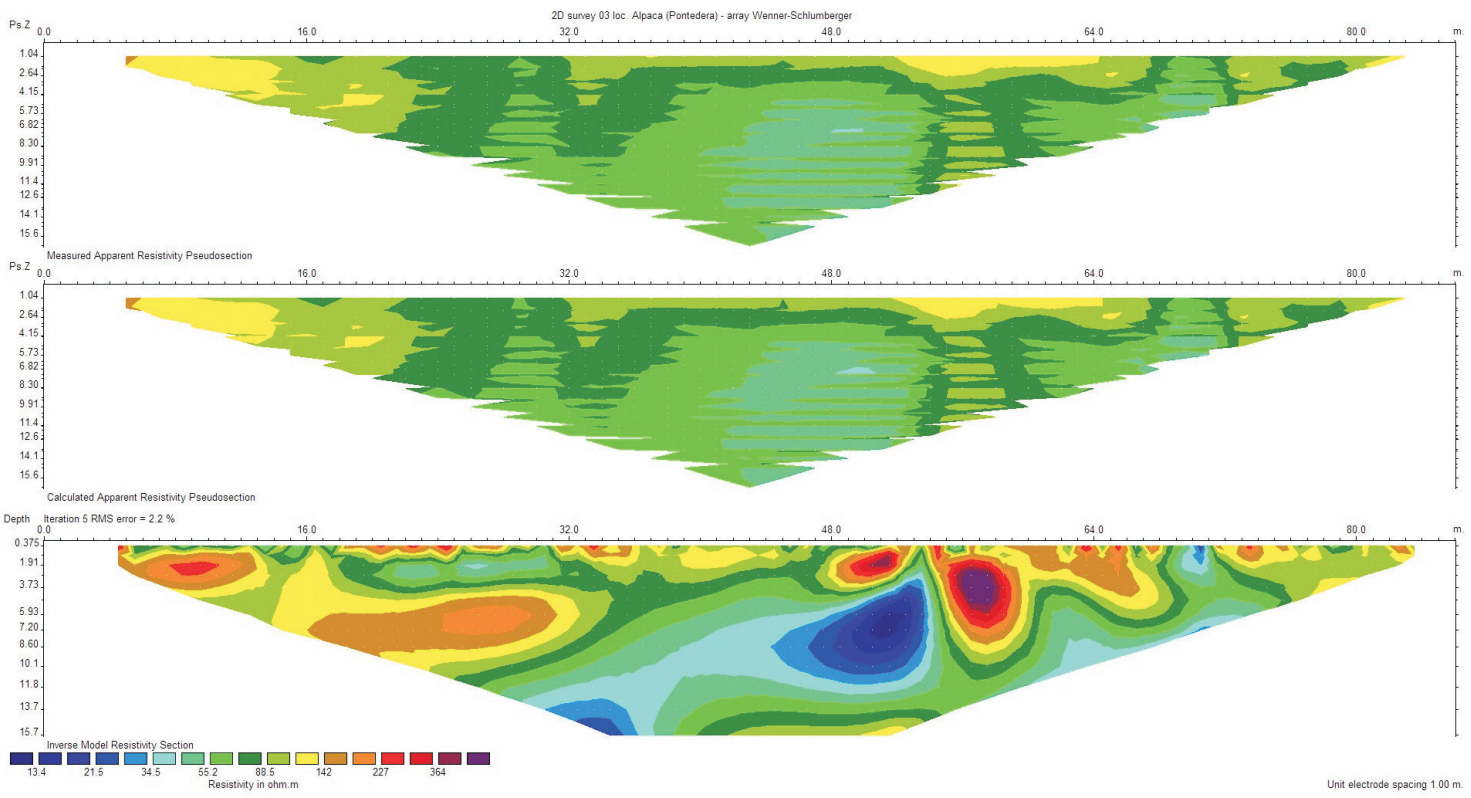
Table with 10 columns: A, B, M, N, Vp, In, p.medio, a, n, p. Rows contain numerical data for various survey points.

A	B	M	N	Vp	In	p.medio	a	n	ρ
6.00	84.00	32.00	58.00	20.757	47.79	45.00	28.00	1.000000	70.95
8.00	86.00	34.00	60.00	21.153	47.68	47.00	28.00	1.000000	72.47
0.00	84.00	28.00	56.00	20.289	55.64	42.00	28.00	1.000000	64.15
2.00	86.00	30.00	58.00	19.984	48.28	44.00	28.00	1.000000	72.83

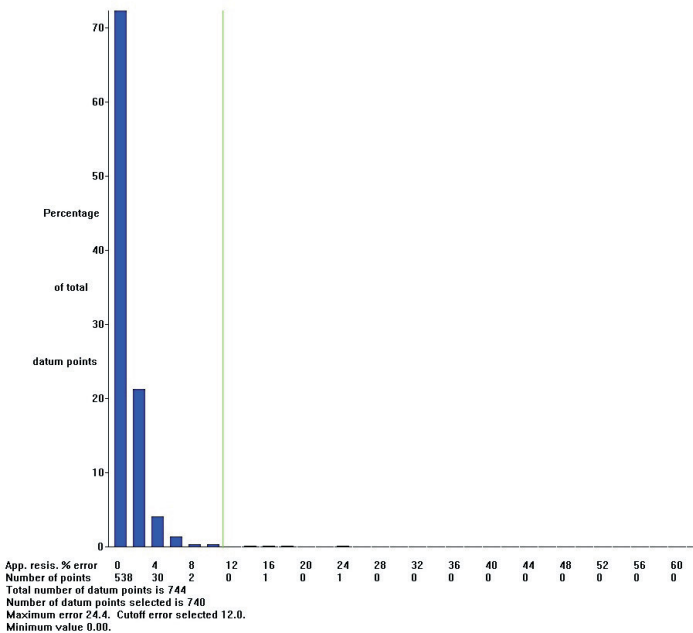
2D survey 03 loc. Alpaca (Pontedera) - array Wenner-Schlumberger
ARRANGEMENT OF MODEL BLOCKS AND APPARENT RESISTIVITY DATUM POINTS



Model block Number of model blocks 744
x Datum point Number of datum points 740
 Number of model layers is 13 Unit electrode spacing 1.00 m.
 Minimum pseudodepth is 1.04. Maximum pseudodepth is 16.4.
 Number of electrodes is 87.



2D survey 03 loc. Alpaca (Pontedera) - array Wenner-Schlumberger

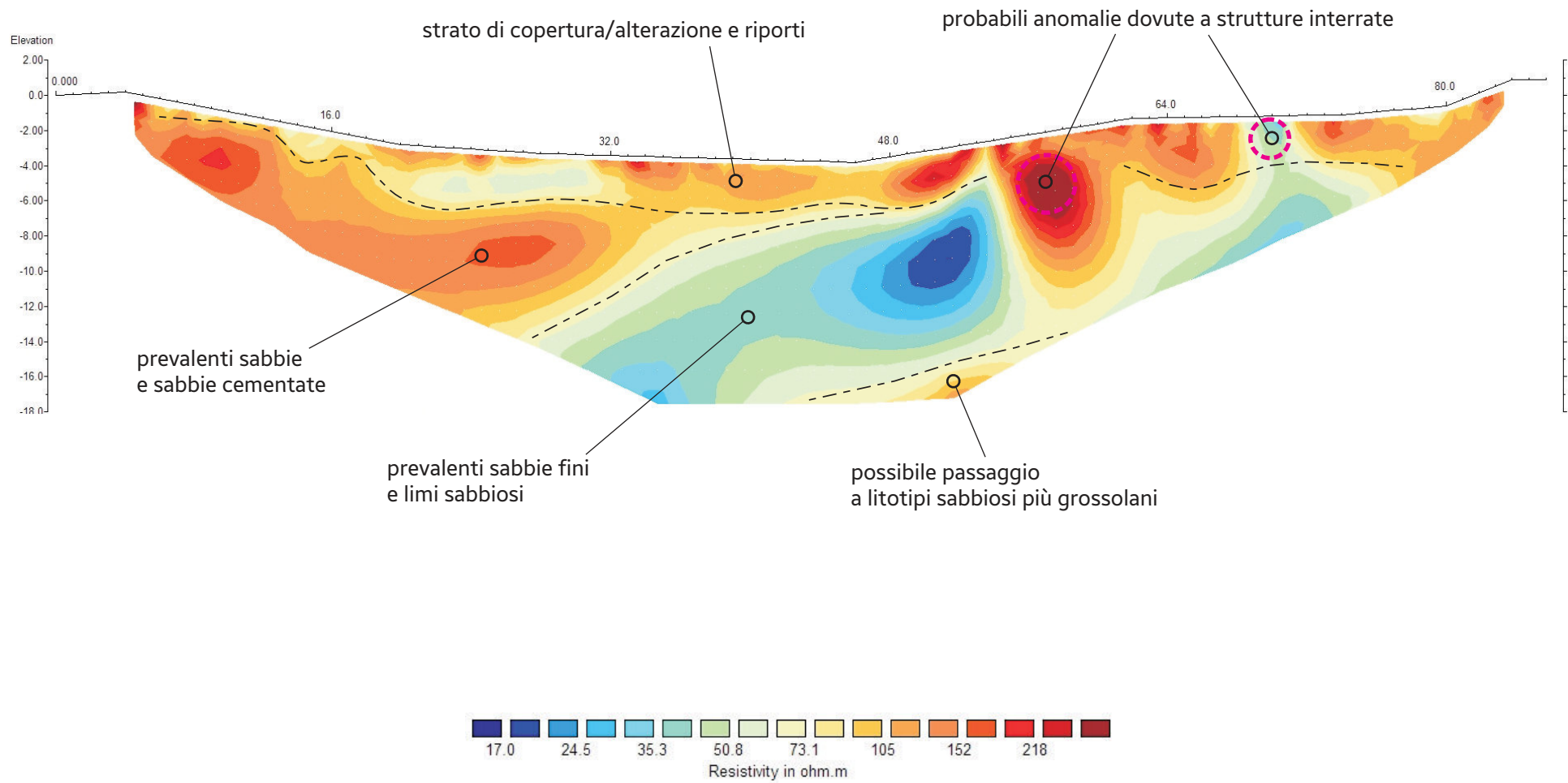


postazione 03

schema modello a blocchi

pseudosezioni e modello di resistività

schema errori sull'inversione per classi percentuali



sez. elettrostratigrafica postazione n. 03 - Agrit. Alpaca (Pontedera) - scala 1:350



ubicazione stendimento postazione 04 - Capannoli

scala 1:1.000



foto stendimento postazione n. 4

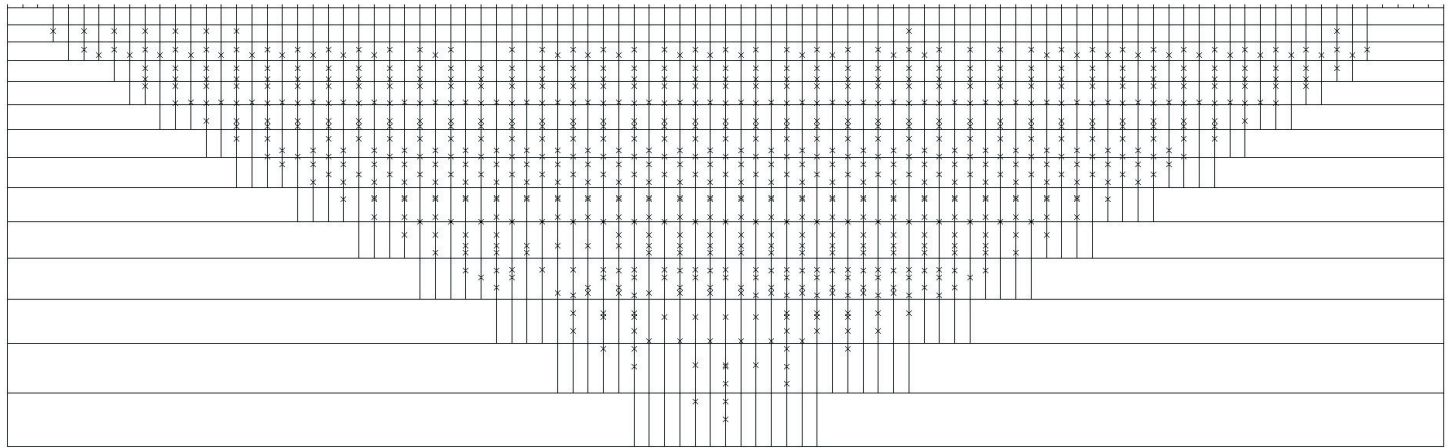
Table with columns A, B, M, N, Vp, In, p.medio, a, n, p. Rows contain numerical data for various parameters across different stations.

Table with columns A, B, M, N, Vp, In, p.medio, a, n, p. Rows contain numerical data for various parameters across different stations.

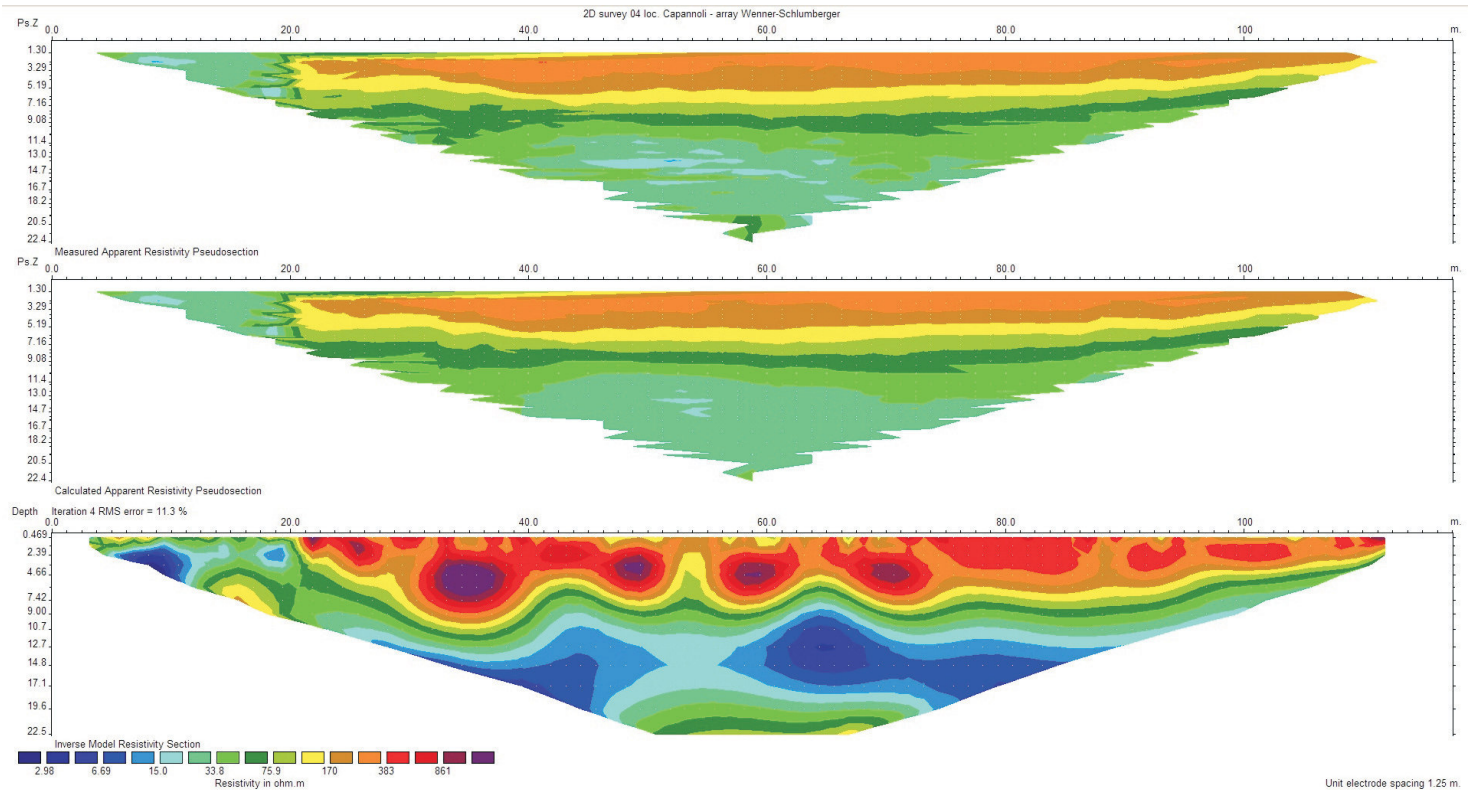
Table with columns A, B, M, N, Vp, In, p.medio, a, n, p. Rows contain numerical data for various parameters across different stations.

Table with columns A, B, M, N, Vp, In, p.medio, a, n, p. Rows contain numerical data for various parameters across different stations.

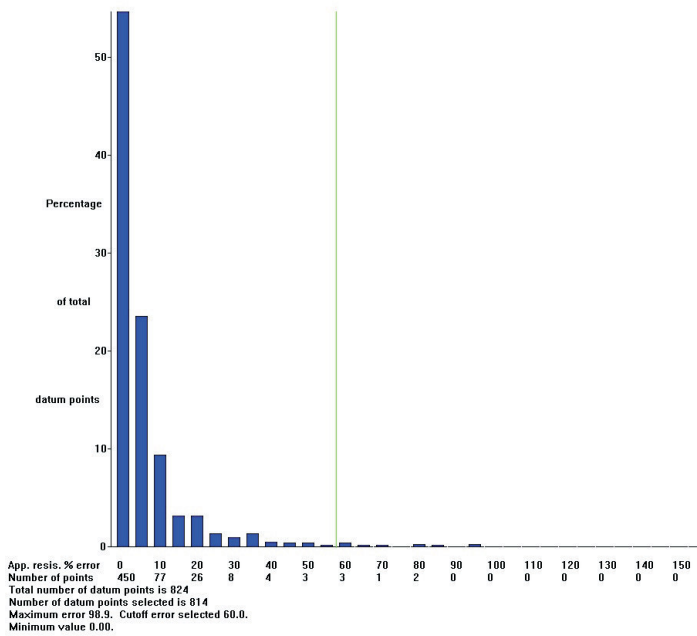
2D survey 04 loc. Capannoli - array Wenner-Schlumberger
ARRANGEMENT OF MODEL BLOCKS AND APPARENT RESISTIVITY DATUM POINTS

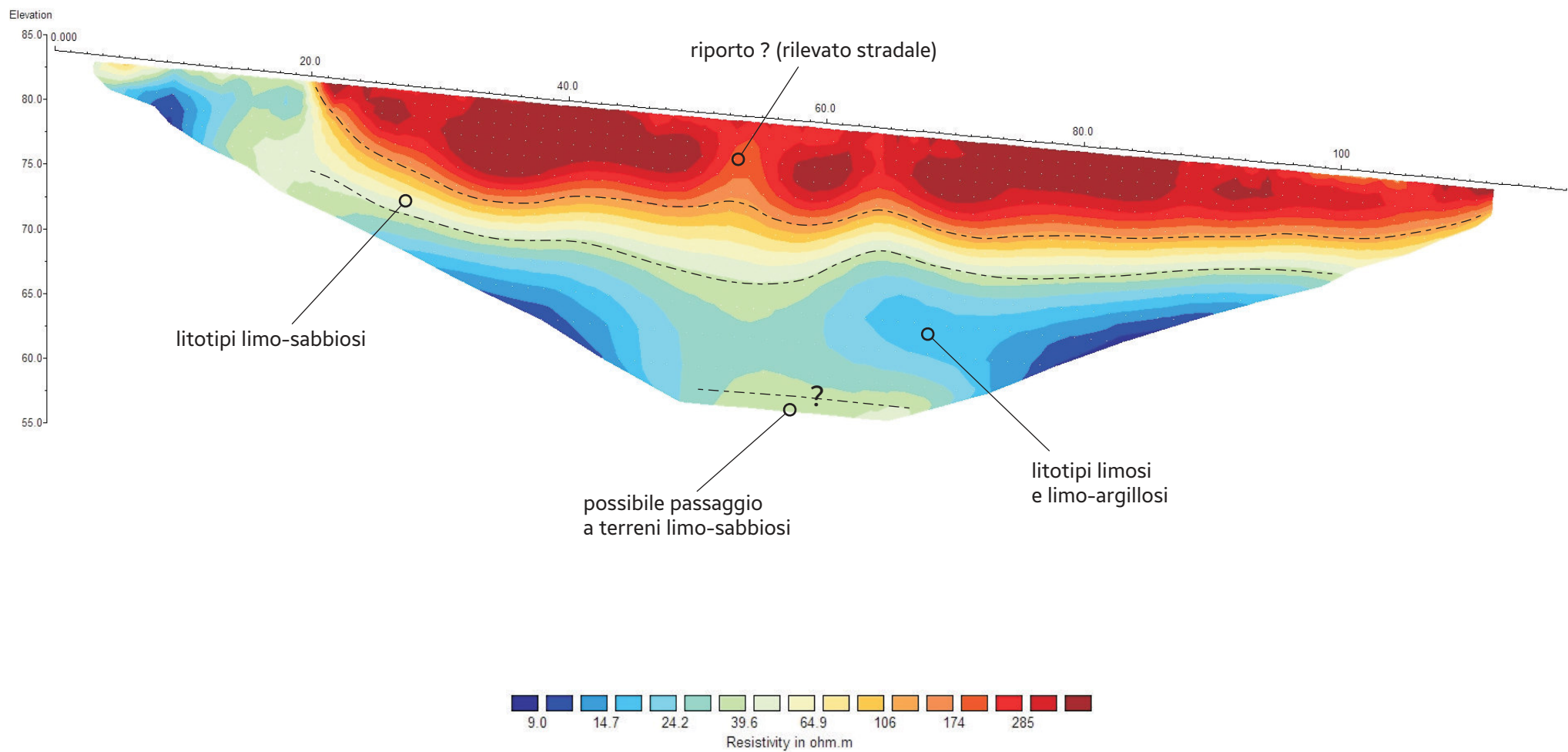


Model block Number of model blocks 860
x Datum point Number of datum points 814
 Number of model layers is 14 Unit electrode spacing 1.25 m.
 Minimum pseudodepth is 1.30. Maximum pseudodepth is 22.4.
 Number of electrodes is 95.



2D survey 04 loc. Capannoli - array Wenner-Schlumberger





sez. elettrostratigrafica postazione n. 04 - Capannoli - scala 1:450



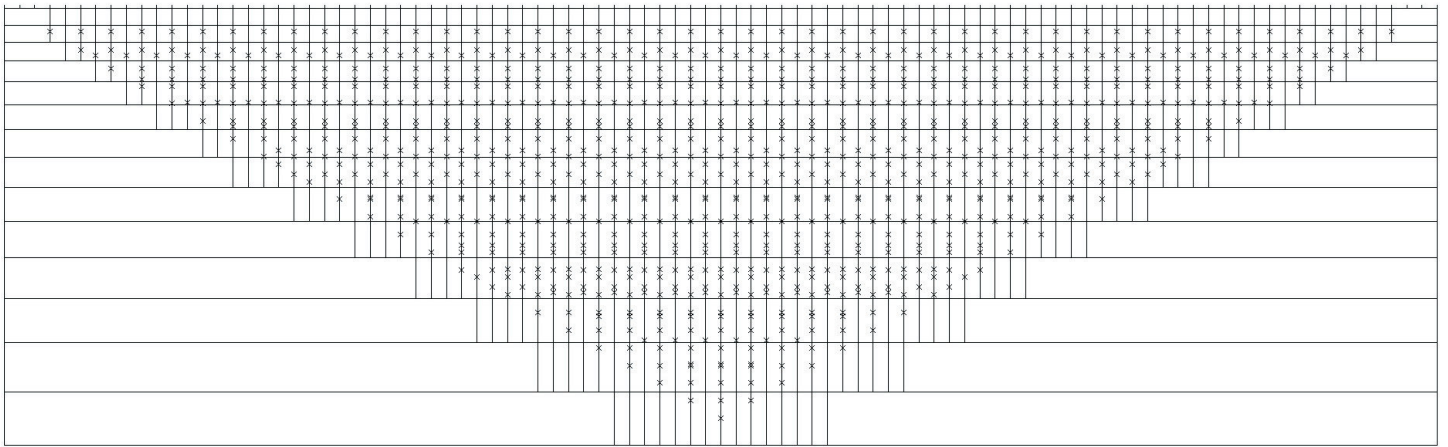
ubicazione stendimento postazione 05 - Palaia

scala 1:1.000

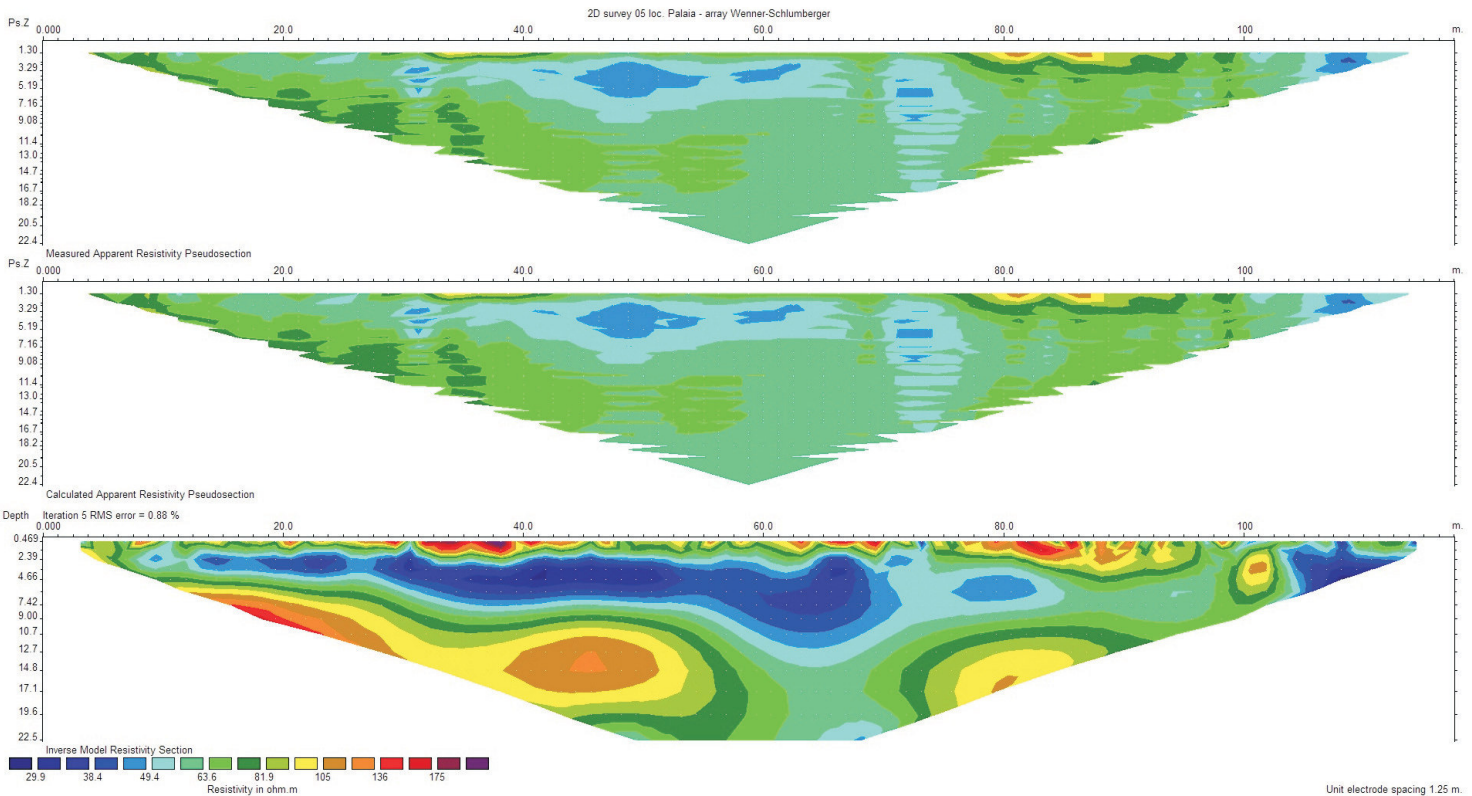


foto stendimento postazione n. 5

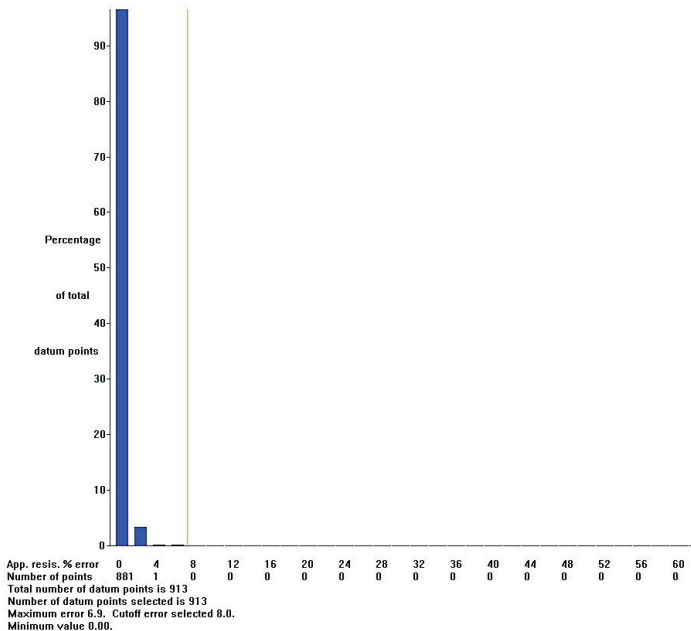
2D survey 05 loc. Palaia - array Wenner-Schlumberger
ARRANGEMENT OF MODEL BLOCKS AND APPARENT RESISTIVITY DATUM POINTS



Model block Number of model blocks 870
 Datum point Number of datum points 913
 Number of model layers is 14 Unit electrode spacing 1.25 m.
 Minimum pseudodepth is 1.30. Maximum pseudodepth is 22.4.
 Number of electrodes is 95.



2D survey 05 loc. Palaia - array Wenner-Schlumberger

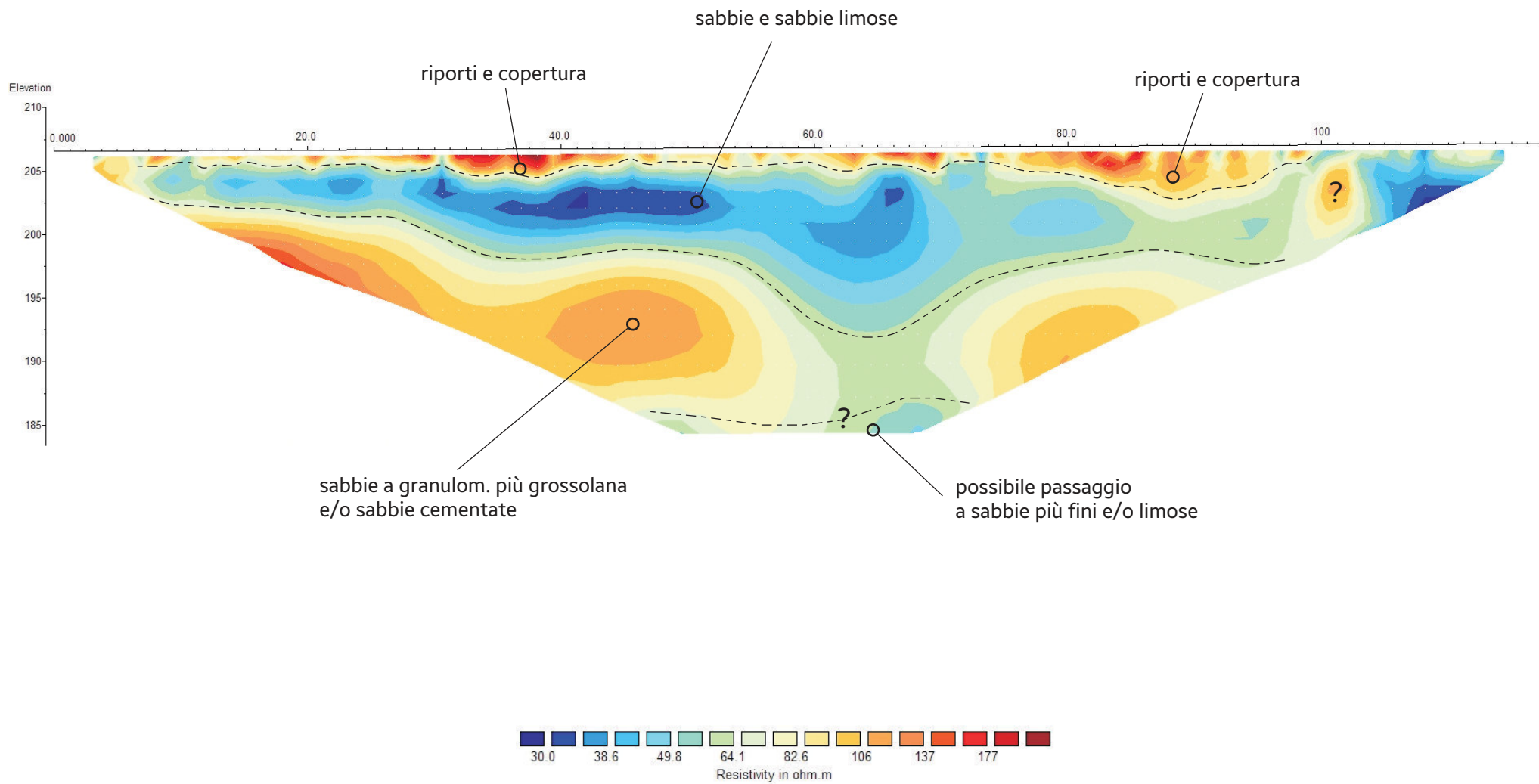


postazione 05

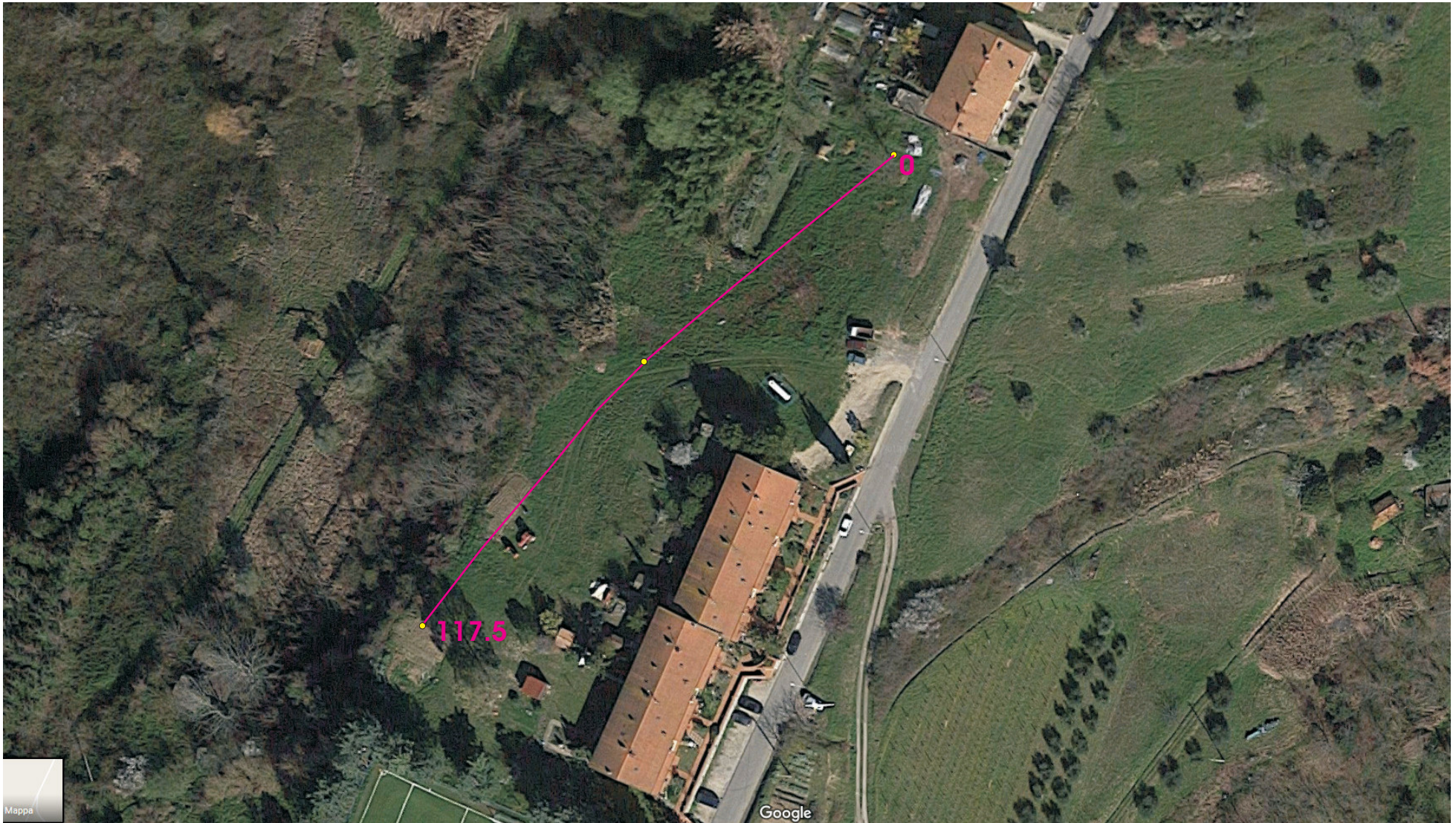
schema modello a blocchi

pseudosezioni e modello di resistività

schema errori sull'inversione per classi percentuali



sez. elettrostratigrafica postazione n. 05 - Palaia - scala 1:450



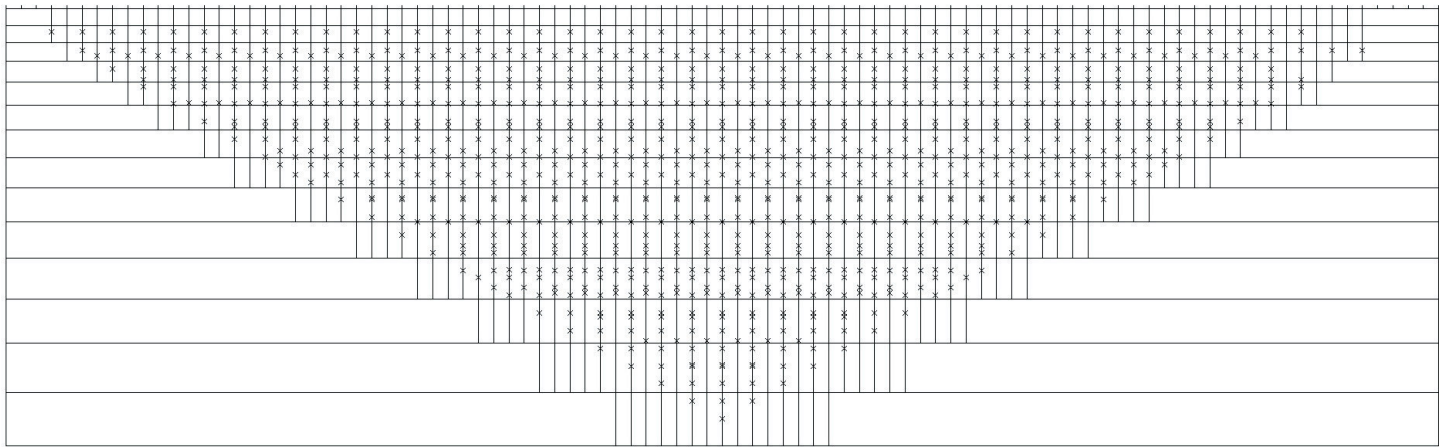
scala 1:1.000

ubicazione stendimento postazione 06 - loc. Montefoscoli - Palaia

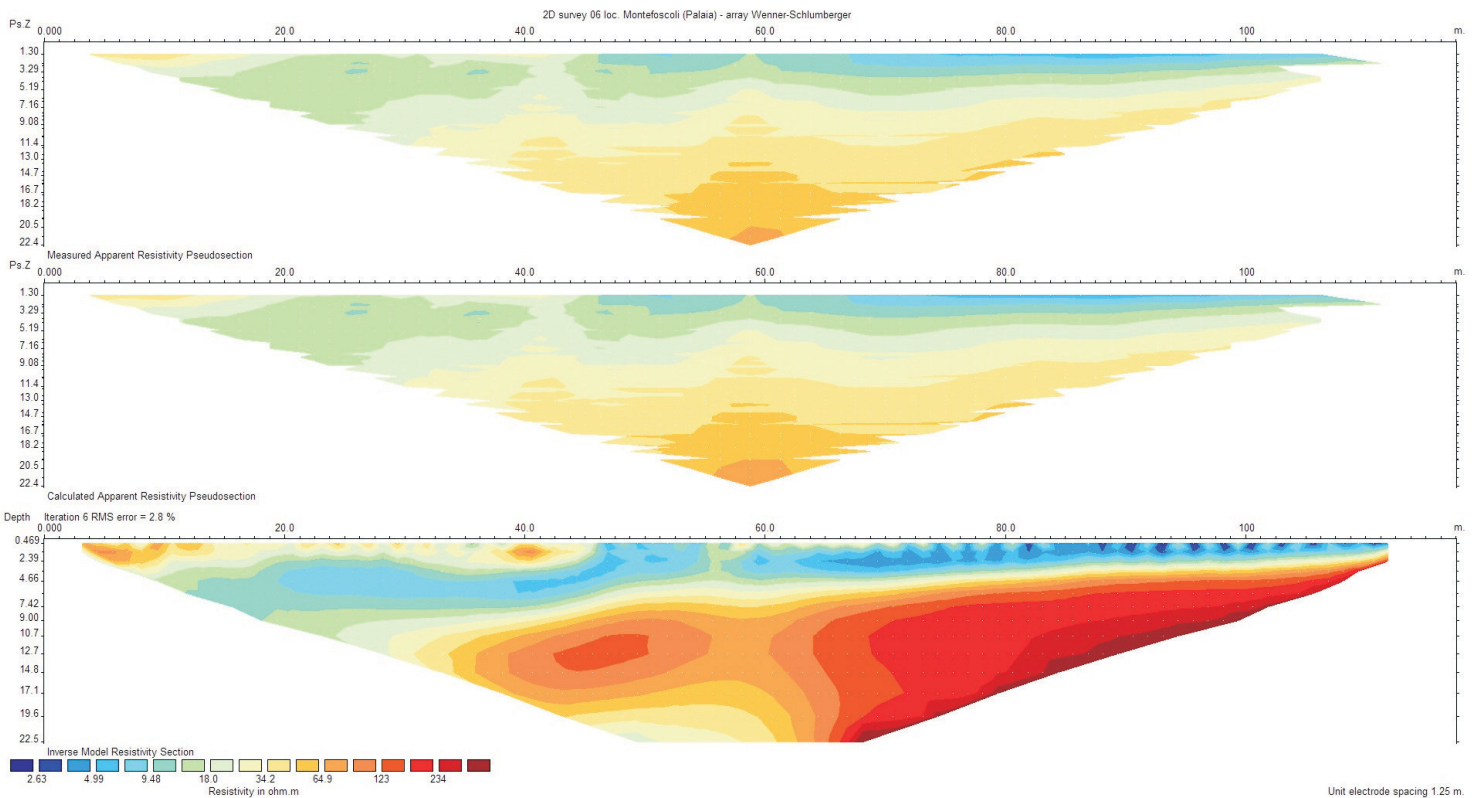


foto stendimento
postazione n. 6

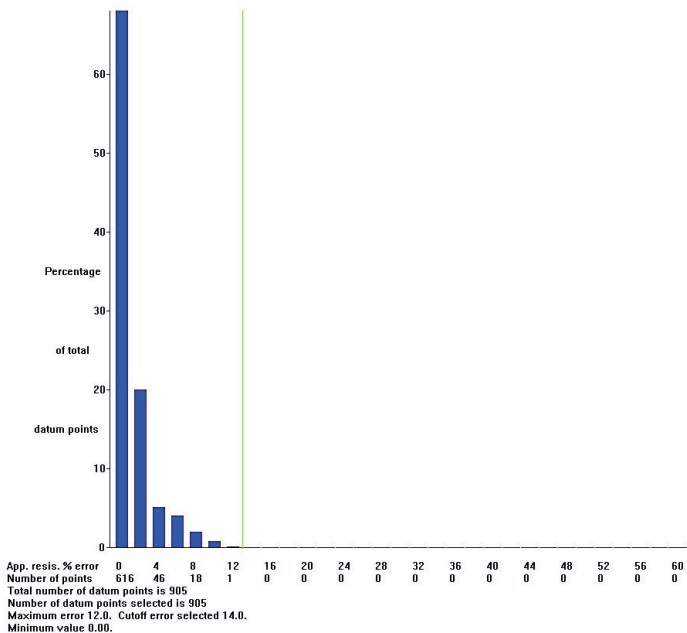
2D survey 06 loc. Montefoscoli (Palaia) - array Wenner-Schlumberger
ARRANGEMENT OF MODEL BLOCKS AND APPARENT RESISTIVITY DATUM POINTS



Model block Number of model blocks 864
x Datum point Number of datum points 905
 Number of model layers is 14 Unit electrode spacing 1.25 m.
 Minimum pseudodepth is 1.30. Maximum pseudodepth is 22.4.
 Number of electrodes is 95.



2D survey 06 loc. Montefoscoli (Palaia) - array Wenner-Schlumberger

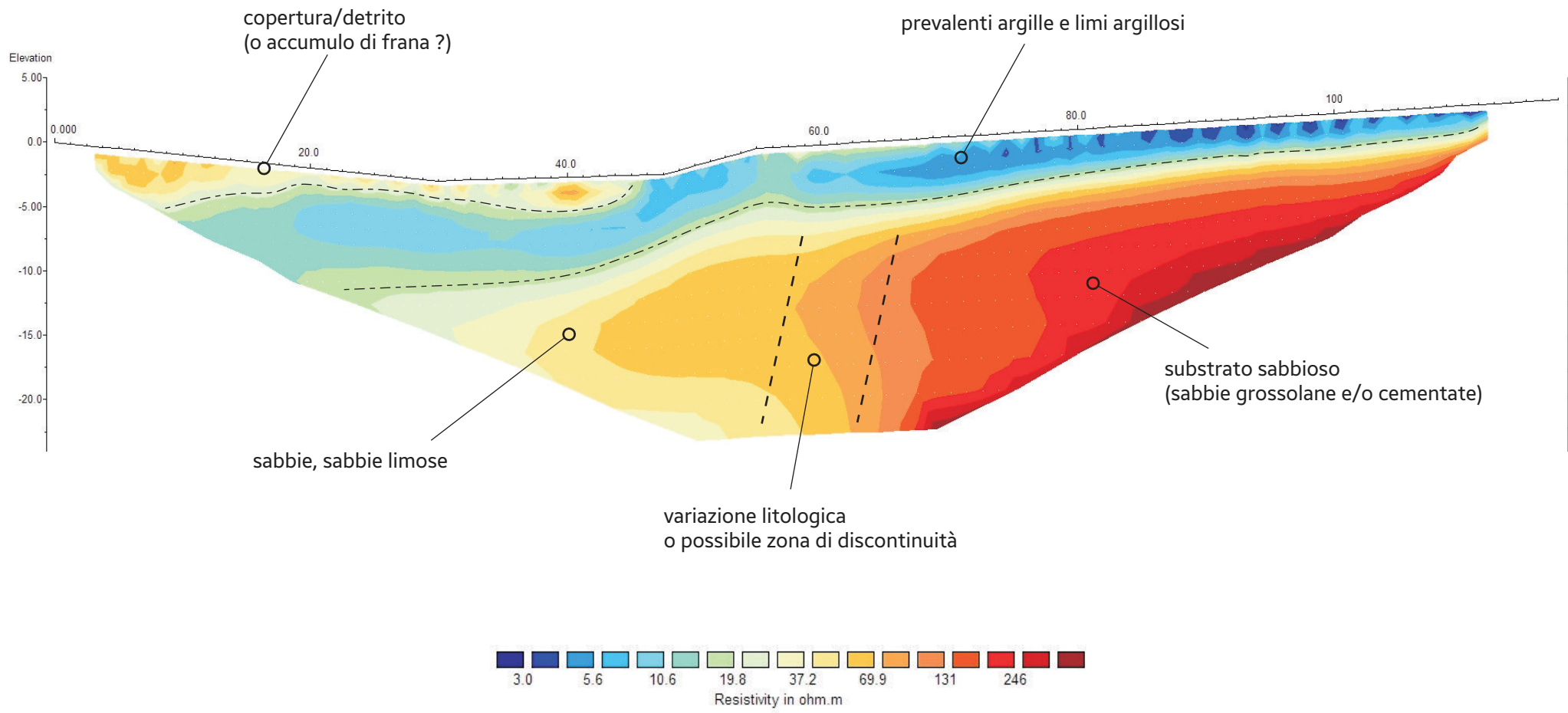


postazione 06

schema modello a blocchi

pseudosezioni e modello di resistività

schema errori sull'inversione per classi percentuali



sez. elettrostratigrafica postazione n. 06 - Montefoscoli - scala 1:450